

BESTWAY

2281

3^{d.}

TWO PAIRS OF FAIR ISLE MITTS

Norwegian Mitts (Left): 2 ozs. 4-ply Main, 1 oz. Contrast

Floral Mitts: 1 oz. 3-ply Main, $\frac{1}{4}$ oz. of 3 Contrasts

KNITTED ON 2 AND 4 NEEDLES



NORWEGIAN MITTS

These roomy two-colour mitts are designed to wear over gloves.

MATERIALS : *Of W.B. Melody Knitting Wool, 4-ply, allow 2 ozs. in natural and 1 oz. in brown ; 1 pair of No. 11 knitting needles and four No. 12 knitting needles, pointed each end.*

TENSION : *Over the Fair Isle, 8½ sts. and 9 rows to 1 inch, but over the st.-st., 8½ sts. and 11 rows to 1 inch.*

MEASUREMENTS : *Overall length, 11½ inches ; width across hand, about 4 inches.*

ABBREVIATIONS : *K., knit ; p., purl ; st., stitch ; rep., repeat ; tog., together ; dec., decrease (by taking 2 sts. tog.) ; inc., increase (by working twice into same st.) ; st.-st., stocking-stitch (1 row k., 1 row p. alternately) ; B, brown ; N, natural ; G, green ; D, dusty pink ; C, crimson ; W, white.*

Sts. in brackets must be worked along row to the extent stated after 2nd bracket.

RIGHT MITT

* Using N wool and the four No. 12 needles, cast on 56 sts., putting 18 sts. on each of 2 needles, and 20 sts. on 3rd needle. With 4th needle, work 12 rounds of k. 2, p. 2 ribbing. Drop N wool, join on B, and rib another 3 rounds. Drop B, take up N, and rib a further 3 rounds. Drop N, take up B and rib 1 round. Now rib 1 round N, and 1 round B ; rep. last 2 rounds once, after which rib 4 rounds N, then 3 rounds B. Now rib another 2 rounds N, when you will have completed 32 rounds rib in all. Break off B. Now begin st.-st., dividing work for palm and back-hand sections and working in rows thus :

1st st.-st. row : With N, k. 2, inc. in next st., (k. 4, inc. in next st.) 3 times, k. 3 ; slip these 25 sts. on to a piece of thread for palm, then, changing to No. 11 needles, k. the remaining 35 sts., to form 1st row of back-hand section. Continue to work back-hand section with No. 11 needles as follows :

Back-hand—2nd row : P. in N.

Still using N wool, work another 2 rows st.-st. then, joining on B, begin the Fair Isle pattern. This is to be worked with the aid of Chart I.

Thus 1st and 2nd rows would be as follows :

1st Fair Isle row : K. 1 B, 1 N, 1 B, 2 N, 1 B, 1 N, (1 B, 2 N) twice, 3 B, 1 N, 1 B, 1 N, 3 B, (2 N, 1 B) twice, 1 N, 1 B, 2 N, 1 B, 1 N, 1 B.

2nd row : P. (1 B, 2 N) 4 times, 2 B, 2 N, 1 B, 1 N, 1 B, 2 N, 2 B, (2 N, 1 B) 4 times.

Continue pattern as in chart, for a further 54 rows, beginning with its 3rd row. Then, still working in pattern, as shown in chart, take 2 tog. with B at

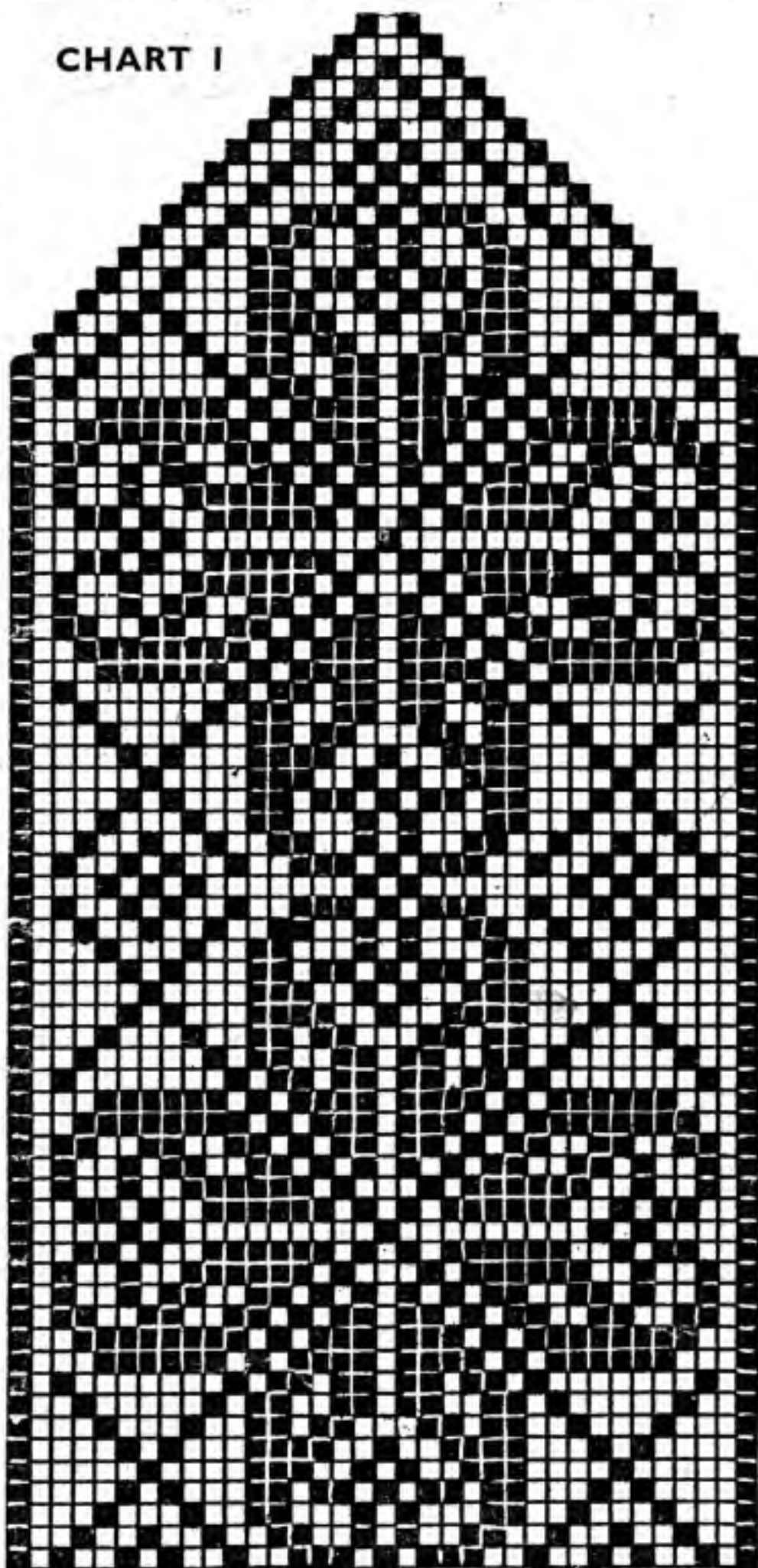
each end of next 16 rows, when 3 sts. will remain. You have now worked last row of chart. Take 3 tog. with B, then fasten off wools.

Return to the 25 sts. left on thread for palm and, slipping them on to a No. 12 needle and holding wrong side towards you, join on N wool and work on palm sts. in rows with No. 12 needles as follows, noting that you have already worked 1st st.-st. row of palm.

Palm—2nd row : With wrong side towards you, p. 25. **3rd row :** K. 25.

4th row : P. 25.*

CHART I



□ NATURAL ■ BROWN

Work another 4 rows st.-st. Now begin to inc. for thumb.

**** 9th row :** K. 2, inc. in next st., k. 1, inc. in next st., k. 20.

Work 3 rows st.-st.

13th row : K. 2, inc. in next st., k. 3, inc. in next st., k. 20.

Work 3 rows st.-st.

17th row : K. 2, inc. in next st., k. 5, inc. in next st., k. 20. Work 3 rows st.-st.

21st row : K. 2, inc. in next st., k. 7, inc. in next st., k. 20. **22nd row :** P.

23rd row : K. 2, inc. in next st., k. 9, inc. in next st., k. 20.** Now form opening for thumb on next row thus :

Thumb-slot row : P. 20 sts., slip the next 13 sts. on to a piece of thread and leave them for thumb, turn and cast on 13 sts., then turn again and p. the 2 remaining sts. of row.

*** Work in st.-st. on these 35 sts. until palm is same length as back section, to start of the top shaping.

Dec. 1 st. at each end of next row and the following 2 alternate rows, then dec. 1 st. at each end of next 13 rows. Take 3 tog. and fasten off.

Return to the 13 sts. on the piece of thread and work thumb.

The Thumb : With right side of work facing you, join on N wool and, using a No. 12 needle, k. the 13 sts. from thread ; with a 2nd No. 12 needle pick up and k. 1 st. from "corner" of thumb opening, then with same needle pick up and k. 6 sts. from first 6 sts. cast on at base of thumb. Using a 3rd No. 12 needle, pick up and k. 7 sts. from remainder cast on at base of thumb, and with same needle pick up and k. 1 st. at other "corner" of thumb opening. There are now 28 sts. in round. With 4th No. 12 needle, k. 2 rounds. On next round, dec. 1 st. at end of 2nd needle and dec. 1 st. at start of 3rd needle. Now work straight on the remaining 26 sts. for length required, then shape top.

1st top shaping round : K. 2, (k. 2 tog., k. 1) to end. **2nd round :** K.

3rd round : (K. 1, k. 2 tog.) to end of round. **4th round :** K.

5th round : (K. 2 tog.) to end of round. Break wool leaving a good end, which run through remaining sts., draw up and fasten off securely. Join seam round hand and press work, avoiding ribs.***

LEFT MITT

Work as for right mitt from * to * Work a further 4 rows st.-st., then proceed as right mitt from ** to **, but read each inc. row backwards.

When you have completed the 23rd row, proceed as follows :

Thumb-slot row : P. 2 sts., slip the next 13 sts. on to a piece of thread and leave them for thumb, turn and cast on 13 sts., then turn again and p. the remaining 20 sts. Now work as given for right mitt from *** to ***.

There are BESTWAY designs for every style and age

FLORAL MITTS

These well-fitting mitts have a floral design on the backs.

MATERIALS : Of W.B. Melody Knitting Wool, 3-ply, allow 1 oz. white and $\frac{1}{4}$ oz. each of green, dusty pink and crimson ; 1 pair of No. 11 knitting needles ; four No. 12 needles, pointed each end.

TENSION : Over the Fair Isle, 9 sts. and 10 rows to 1 inch, but over the st.-st., 9 sts. and 12 rows to 1 inch.

MEASUREMENTS : Overall length, about $9\frac{1}{2}$ inches ; width across back of hand, nearly $3\frac{1}{2}$ inches.

ABBREVIATIONS : See 1st Mitts.

RIGHT MITT

* Using W wool and the four No. 12 needles, cast on 62 sts., putting 20 sts. on each of 2 needles, and 22 sts. on 3rd needle. With the 4th needle, work in k. 1, p. 1 ribbing for 22 rounds.

Changing to st.-st., divide work for palm and back-hand sections, working in rows as follows :

1st st.-st. row : K. 2, (k. 2 tog., k. 3) 5 times, k. 2 tog., k. 2 ; slip these 25 sts. on to a piece of thread for palm, then, changing to No. 11 needles, k. the remaining 31 sts., for 1st row of back-hand section. Continue on the back-hand sts. with No. 11 needles as follows :

Back-hand section—Next row : P. Now begin the Fair Isle pattern on these 31 sts., working with the aid of Chart 2.

Thus 1st and 2nd rows would be as follows :
1st Fair Isle row : Joining on D, k. 4 W, 5 D, 13 W, 5 D, 4 W.

2nd row : Joining on C, p. 3 W, 2 D, 3 C, 2 D, 11 W, 2 D, 3 C, 2 D, 3 W. Work a further 54 rows, beginning with the 3rd row of chart and joining on G wool on the 6th Fair Isle row. When these further 54 rows are completed, still work in pattern as chart shows, but dec. 1 st. at each end of next row and the following 5 alternate rows, after which dec. 1 st. at each end of next 5 rows. You have now completed last row of chart. Cast off remaining 9 sts.

Return to the 25 sts. left on thread for palm, and slipping them on to a No. 12 needle, join on W wool and, holding wrong side towards you, work in rows of st.-st. with No. 12 needles as follows, noting that you have already worked the 1st st.-st. row on these sts.

Palm—2nd row : P. 25.*

Work another 4 rows st.-st., then begin to inc. for thumb.

**** 7th row :** K. 2, inc. in next st., k. 1, inc. in next st., k. 20. Beginning with a p. row, work 5 rows st.-st.

13th row : K. 2, inc. in next st., k. 3, inc. in next st., k. 20. Work 5 rows st.-st.

19th row : K. 2, inc. in next st., k. 5, inc. in next st., k. 20. Work 5 rows st.-st.

25th row : K. 2, inc. in next st., k. 7, inc. in next st., k. 20. Work 5 rows st.-st.

31st row : K. 2, inc. in next st., k. 9, inc. in next st., k. 20. Work 2 rows st.-st.**

Now form opening for thumb.

Thumb-slot row : P. 20 sts., slip the next 13 sts. on to a piece of thread and leave them for thumb, turn and cast on 13 sts., then turn again and p. the 2 remaining sts. of row.

Next row : K. 35.

Next row : P. 25, p. 2 tog., p. 1, p. 2 tog., p. 5. **Next row :** K.

Next row : P. 24, p. 2 tog., p. 1, p. 2 tog., p. 4.

*** Work in st.-st. on the 31 sts. until palm is same length as back, to start of top shaping.

To shape top, dec. 1 st. at each end of next row and the following 7 alternate rows. Then dec. 1 st. at each end of next 3 rows. Cast off remaining 9 sts.

Return to the 13 sts. on a piece of thread and work thumb.

The Thumb : With right side facing you, join on W wool and, using a No. 12 needle, k. the 13 sts. from thread ; with a 2nd No. 12 needle, pick up and k. 1 st. from "corner" of thumb opening, then with same needle pick up and k. 6 sts. from first 6 cast on at base of thumb. Using a 3rd No. 12 needle, pick up and k. 7 sts. from remainder cast on at base of thumb and with same needle pick up and k. 1 st. at other "corner" of thumb opening. There are now 28 sts. in round. With 4th No. 12 needle, k. 2 rounds.

Next round : K. but dec. 1 st. at end of 2nd needle and another at start of 3rd needle. Rep. last 3 rounds twice.

Work on the remaining 22 sts. for length required. Now shape top.

1st top shaping round : K. 1, (k. 2 tog., k. 1) to end of round.

2nd round : K.

3rd round (K. 1, k. 2 tog.) to end of round. **4th round :** K.

5th round : (K. 2 tog.) to end of round. Break wool, leaving a good end, run it through remaining sts., draw up and fasten off securely. Join seam round hand. Press work, avoiding ribs.***

LEFT MITT

Work as given for right mitt from * to *. Work 4 rows more in st.-st., then work as for right mitt from ** to **, but read each inc. row backwards.

When you have completed the 33 rows, form thumb slot on next row thus :

Thumb-slot row : P. 2 sts., slip the next 13 sts. on to a piece of thread and leave for thumb, turn and cast on 13 sts., then turn again and p. the remaining 20 sts. of row.

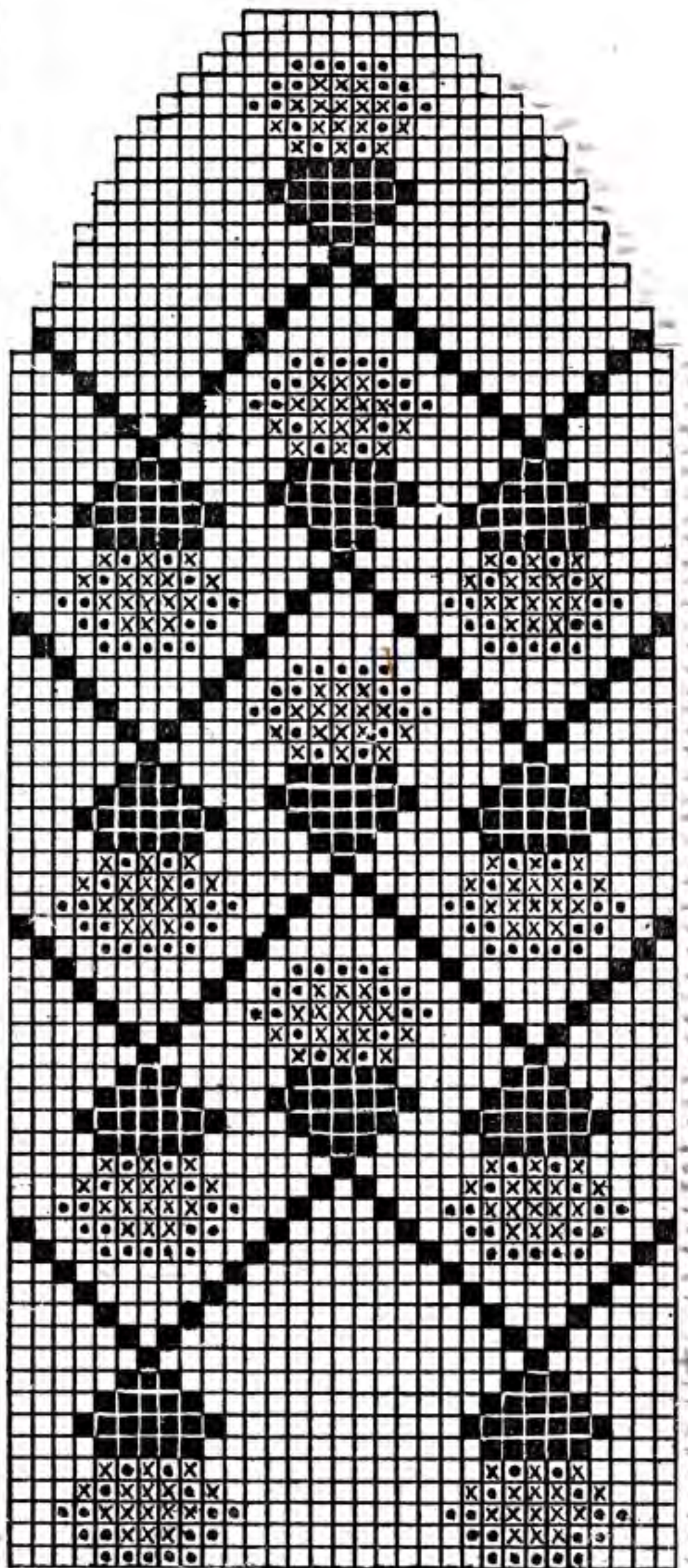
Next row : K.

Next row : P. 5, p. 2 tog., p. 1, p. 2 tog., p. 25. **Next row :** K.

Next row : P. 4, p. 2 tog., p. 1, p. 2 tog., p. 24.

Now work as given for right mitt from *** to ***.

CHART 2



<input type="checkbox"/>	WHITE	<input checked="" type="checkbox"/>	DUSTY PINK
<input checked="" type="checkbox"/>	GREEN	<input checked="" type="checkbox"/>	CRIMSON