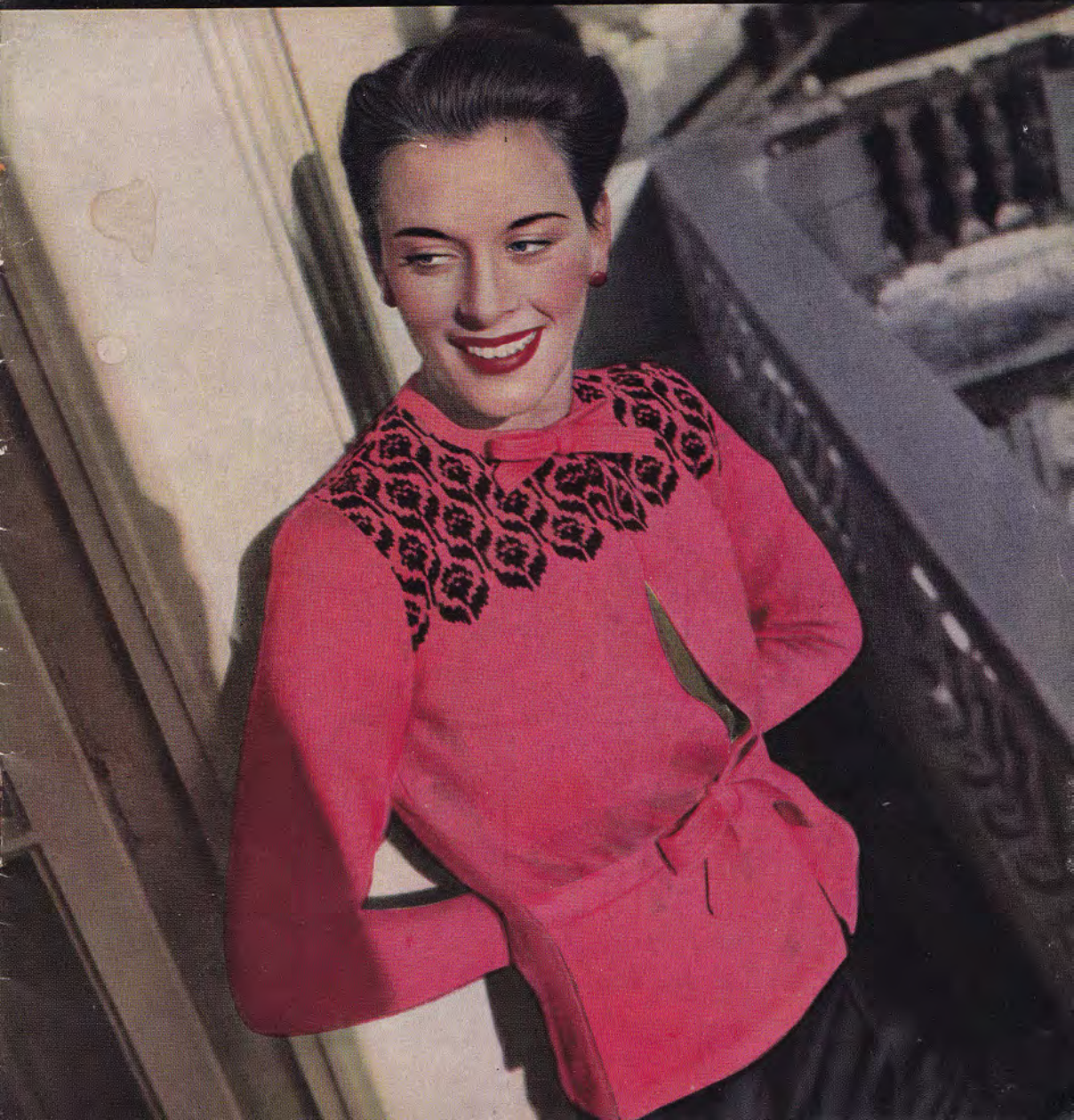


MARCH
1948

STITCHCRAFT

9[¢]



Front Cover Jacket

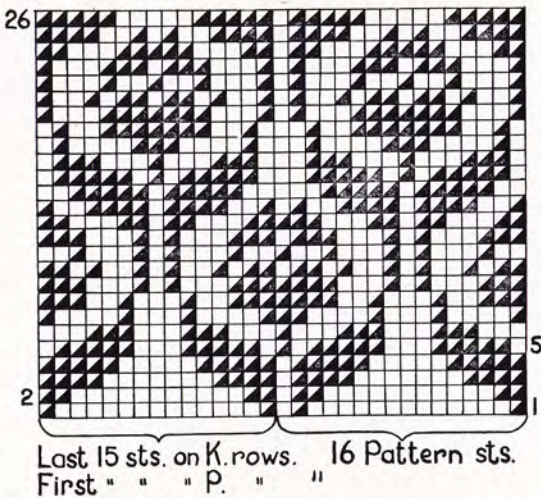
MATERIALS: 9 ozs. main shade and 1 oz. contrast, Patons Beehive Fingering, 3-ply ("Patonised" shrink-resist finish). A pair each No. 10 and No. 11 "Beehive" needles. Four press-studs.

MEASUREMENTS: To fit 34-36-inch bust; length from top of shoulders, 22½ inches; sleeve seam 18 inches.

TENSION: 7½ stitches to an inch on No. 10 needles.

BACK

With No. 11 needles and main shade, cast on 125 sts. and work 18 rows stocking-stitch, starting



with a knit row. Make hem by folding work in half lengthways, purl side inside, and knitting together one stitch from cast-on edge together with one from left needle. Purl back.

Change to No. 10 needles and continue in stocking-stitch, decreasing at each end of 5th and every following 6th row until 113 sts. remain. Continue straight until piece measures 6 inches, ending with a knit row.

Details of these embroidery designs are given on page 6



NEXT row: p. 17, (p. 2 tog., p. 2) 19 times, p. 2 tog., p. 18 (93 sts.). ****NEXT row:** Cast off knitways. With right side of work facing, pick up and knit into *back* loop of each knit stitch all along cast-off edge; the front loops make a ridge on right side of work. Work 9 rows stocking-stitch, starting with a purl row, then cast off and pick up stitches again as before.**

NEXT row: p. 12, make a stitch by picking up thread lying between stitch just knitted and following stitch; put this thread on left needle and purl into it, (p. 3, make 1 as before) 23 times, p. 12 (117 sts.).

Work 8 rows straight, then increase at each end of next and every following 8th row until there are 129 sts. Continue straight until work measures 8 inches from waist, ending with a purl row.

Shape armholes by casting off 7 sts. at beginning of next 2 rows, then k. 2 tog. each end of every row until 95 remain. Now work from chart, working the 16 pattern stitches 5 times right across, then last 15 sts. on knit rows and first 15 sts. on purl rows, as indicated.

After the first 26 rows are done, repeat rows 5 to 22 again. Now shape shoulders by casting off 11 sts. at beginning of next 6 rows, working in pattern, *i.e.*, rows 23 to 26, then rows 5 and 6. Cast off remaining stitches.

FRONTS

Right: With No. 11 needles and main shade, cast on 75 sts. and after working 18 rows stocking-stitch, make hem as before. Purl back.

Change to No. 10 needles and continue in stocking-stitch, casting on 5 at beginning of next row, front
please turn to page 12 3

FRONT COVER JACKET

continued from page 3

edge. Decrease at side edge on 5th and every following 6th row until there are 74 sts. Work straight until piece measures 6 inches, ending with a knit row.

NEXT ROW: p. 13, (p. 2 tog., p. 3) 9 times, p. 2 tog., p. 14 (64 sts.). Work waist as for back from ** to **.

NEXT ROW: p. 16, make a stitch as before, (p. 3, make 1) 11 times, p. 15 (76 sts.).

Continue in stocking-stitch, increasing at side edge on 9th and every following 8th row until there are 82 sts. Work straight until front measures 8 inches from waist, ending with a knit row.

Shape armhole by casting off 7 sts. at beginning of next row, then decrease at side edge on every row until 63 sts. remain. Now with right side of work facing, start 2-colour pattern, working the 26 rows on chart, then rows 5 to 10 inclusive again.

On next row, cast off 20 sts., neck edge, then continue in 2-colour pattern, decreasing at neck edge on every row until 33 remain. Shape shoulder by casting off 11 sts. at beginning of next and following 2 alternate rows, armhole edge.

Left: Work to correspond with right, reversing shapings; cast on the 5 sts. at front edge at beginning of the purl row directly after hem is done. Start to shape armhole with knit instead of purl side of work facing, and neck with purl instead of knit side facing.

SLEEVES

With No. 11 needles and main shade, cast on 52 sts. and make hem as for back, purl back, then change to No. 10 needles and continue in stocking-stitch until piece measures 3 inches.

Now increase at each end of next and every following 6th row until there are 96 sts. on needle. Work straight until side edge measures 18 inches.

Shape top by casting off 2 sts. at beginning of every row until 44 remain, then 1 at beginning of every row until 24 remain. Cast off.

NECK AND WAIST TIES

For neck tie, cast on 5 sts. in main shade and knit into front and back of each stitch, making 10.

NEXT ROW: * wool forward, slip 1 purlways, wool back, k. 1; repeat from * to end. Repeat this row until tie is 32 inches long; cast off, taking 2 sts. together each time.

For waist, cast on 8 sts., knit into front and back of each stitch, then work in pattern as for neck tie for 11 inches. Cast off as before. Make another piece the same.

TO MAKE UP

Press pieces on wrong side under a damp cloth. Join side, shoulder and sleeve seams; insert sleeves. Turn back the 5 sts., cast on at front edges as a hem all down each front. Pin tie to neck edge before sewing to make sure the ends are the right length.

Sew on waist ties about 2 inches in from front edges. Sew on press-studs, 2 at waist line and 2 at yoke.



● Here is another picture of the Fair Isle jumper on page 11. The shape and design are ideal for a boy or girl.

BOY'S CARDIGAN

continued from page 10

a spare needle, decrease at armhole edge on next 4 rows, keeping front edge straight.

Now keep armhole edge straight and shape front by decreasing inside ribbed border on next and every following 3rd row until 28 sts. remain. Work straight until front measures 12 inches, then shape shoulder by casting off 5 at beginning of next 4 alternate rows, armhole side. Work straight on remaining 8 sts. for another 1½ inches in rib, then leave stitches on safety-pin.

Work 41 sts. for other front to match, reversing shapings.

Return to 67 sts. for back, and continue in stocking-stitch, decreasing at each end of next 4 rows. Work straight until back is same length as fronts, then shape shoulders by casting off 5 sts. at beginning of next 8 rows; cast off.

SLEEVES

With No. 11 needles and main shade, cast on 53 sts. and work 2 inches k. 1, p. 1 rib as for welt. Purl one row then change to No. 9 needles and work Fair Isle band as given for back and fronts.

Continue in main shade, increasing at each end of every 8th row until there are 61 sts. Work straight until side edge measures 10 inches.

Shape top by casting off 4 sts. at beginning of next 2 rows, then decrease at each end of every following row until 16 sts. remain. Cast off.

TO MAKE UP

Press pieces carefully on wrong side under a damp cloth. Join shoulder and sleeve seams; insert sleeves. Cast off together or graft the two lots of rib stitches and stitch along back of neck. Sew on buttons.