



BUTTON THRO' CARDIGAN

MATERIALS—Target "Campanula" 3-ply, 3 ozs. each natural or white and red, 2 ozs. each green and yellow, 1 oz. brown; knitting needles, two No. 12 and two No. 10; 8 buttons.

TENSION—About 8 sts. to 1 inch in width, and 10 rows to 1 inch in depth.

MEASUREMENTS—To fit a 34 to 36-inch bust, length from shoulder to lower edge, 23 inches; sleeve seam, 18 inches.

ABBREVIATIONS FOR COLOURS—N., natural; r., red; g., green; y., yellow.

Back—With brown wool and No. 12 needles begin at lower edge, casting on 126 sts. Work in rib of k. 1, p. 1 for 5½ inches, inc. one st. at end of last row. Change to No. 10 needles. With n. work 18 rows st.-st. **19th row**—K. 7 n. (1 r., 13 n.) till 8 rem., 1 r., 7 n. **20th row**—P. 1 r. (5 n., 3 r., 5 n., 1 r.) to end. **21st row**—As 20th row but k. **22nd row**—P. 1 n. (1 r., 4 n., 3 r., 4 n., 1 r., 1 n.) to end. **23rd row**—K. (2 n., 1 r., 4 n., 1 r., 4 n., 1 r., 1 n.) till 1 rem., 1 n. **24th row**—P. 1 r. (2 n., 2 r., 5 n., 2 r., 2 n., 1 r.) to end. Rep. 23rd and 22nd rows respectively.

27th row—K. 1 r. (4 n., 5 r., 4 n., 1 r.) to end. **28th row**—P. (7 g., 1 y., 6 g.) till 1 rem., 1 g. **29th row**—K. (6 g., 3 y., 5 g.) till 1 rem., 1 g. **30th row**—P. (5 g., 5 y., 4 g.) till 1 rem., 1 g. **31st row**—K. (4 g., 3 y., 1 g., 3 y., 3 g.) till 1 rem., 1 g. **32nd row**—P. (3 g., 3 y., 3 g., 3 y., 2 g.) till 1 rem., 1 g.

33rd row—K. (2 g., 3 y., 5 g., 3 y., 1 g.) till 1 rem., 1 g. Rep. from 32nd row back to 19th row inclusive. With n. wool work 18 rows st.-st. Rep. from 19th to 27th row inclusive, using r. in place of n. and n. in place of r. and reading k. for p. and p. for k. Rep. from 28th to 33rd row inclusive, using g. in place of y. and y. in place of g., and reading k. for p. and p. for k. Now shape armholes. Work

according to Chart A, and from 99th to 112th row inclusive. With r. work 18 rows st.-st. **131st row**—With n. inc., k. till 1 rem. inc. With n., work 3 rows st.-st. Rep. last 4 rows 3 times, then rep. 131st row.

148th row—With n., p. Work according to Chart B on page 28 from 149th to 172nd row inclusive. Cast off.

Left Front—With brown wool and No. 12 needles, begin at lower edge, casting on 64 sts. Work in rib of k. 1, p. 1 for 5½ inches. Change to No. 10 needles. With n. work 18 rows st.-st. **19th row**—K. 7 n., 1 r., (13 n., 1 r.) to end. **20th row**—P. 2 r., 5 n., 1 r. (5 n., 3 r., 5 n., 1 r.) to end. **21st row**—K. (1 r., 5 n., 3 r., 5 n.) till 8 rem., 1 r., 5 n., 2 r.

22nd row—P. 2 r., 4 n., 1 r., 1 n. (1 r., 4 n., 3 r., 4 n., 1 r., 1 n.) to end.

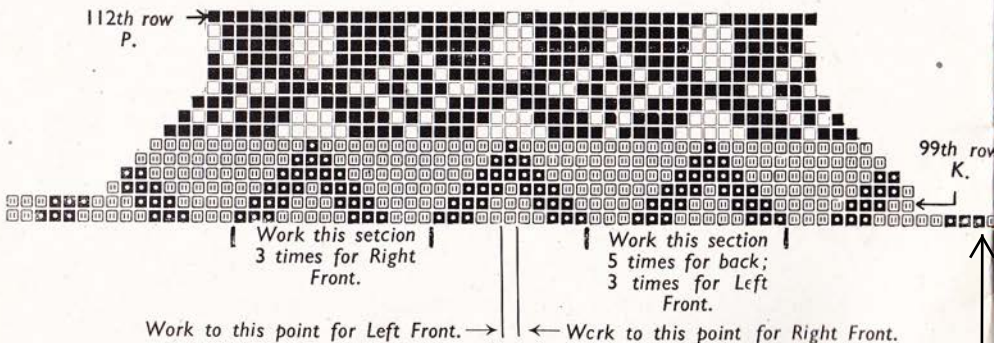
23rd row—K. 2 n., 1 r., 4 n., 1 r. (4 n., 1 r., 3 n., 1 r., 4 n., 1 r.) to end.

24th row—P. 3 n., 2 r., 2 n., 1 r. (2 n., 2 r., 5 n., 2 r., 2 n., 1 r.) to end. Rep. 23rd and 22nd rows respectively. **27th row**—K. (1 r., 4 n., 5 r., 4 n.) till 8 rem., 1 r., 4 n., 3 r. **28th row**—P. (1 y., 13 g.) till 8 rem., 1 y., 7 g. **29th row**—K. 6 g., (3 y., 11 g.) till 2 rem., 2 y. **30th row**—P. 3 y. (9 g., 5 y.) till 5 rem., 5 g. **31st row**—K. 4 g. (3 y., 1 g., 3 y., 7 g.) till 4 rem., 3 y., 1 g.

32nd row—P. 2 g. (3 y., 5 g., 3 y., 3 g.) till 6 rem., 3 y., 3 g. **33rd row**—K. 2 g. (3 y., 5 g., 3 y., 3 g.) till 6 rem., 3 y., 3 g. Rep. from 32nd row back to 19th row inclusive. With n., work 18 rows st.-st. Rep. from 19th to 27th row inclusive, reading each row backwards, and using r. in place of n., and n. in place of r., and reading k. for p. and p. for k. Rep. from 28th to 33rd row inclusive using g. in place of y., and y. in place of g., and still reading k. for p. and p. for k. Now work according to Chart A from 99th to 112th

Please turn to page 28

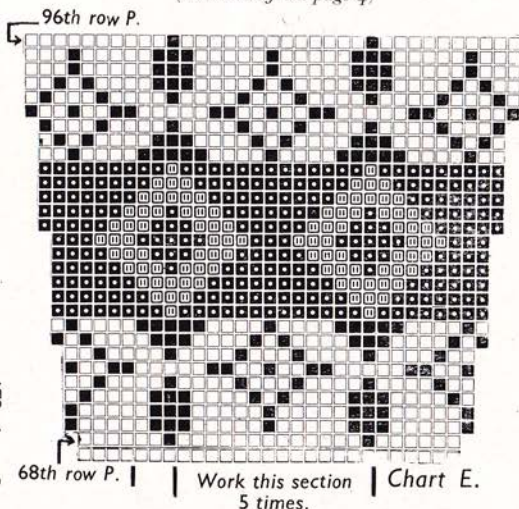
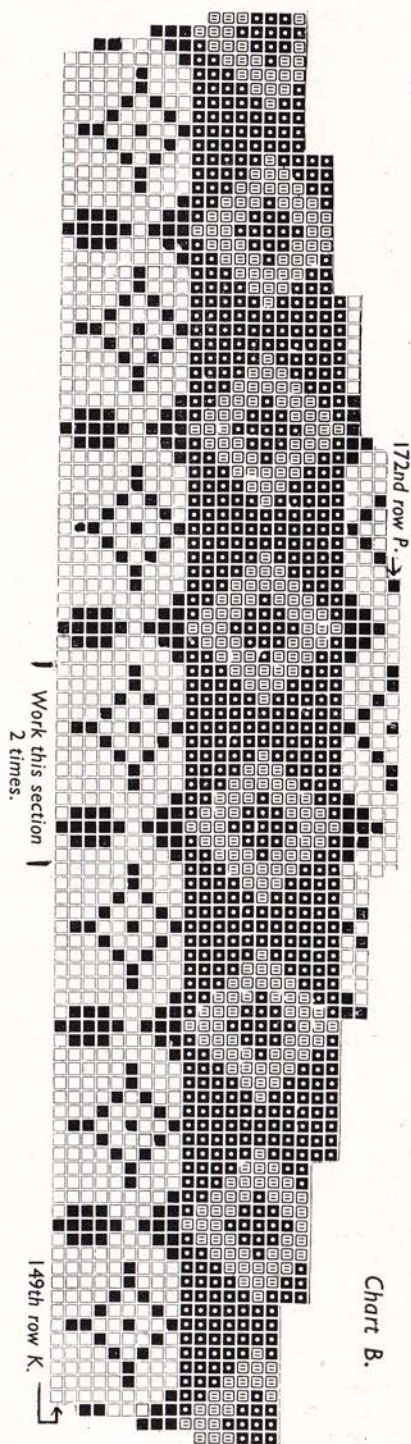
Chart A



Missing 1 stitch at the end, see the left side for a mirror image.

Button Thro' Cardigan

(Continued from page 4)



row inclusive, working the rows as far as indicated. With r., work 18 rows st.-st.

131st row—With n., inc., k. to end. With n., work 3 rows st.-st. Rep. last 4 rows once, then rep. *131st row***.

142nd row—With n., cast off 8, p. to end.

143rd row—With n., inc., k. till 2 rem., dec. With n., work 3 rows dec. one st. at neck edge. Rep. *143rd row*, and work one row dec. at neck edge. Work as Chart C from *149th row* dec. one st. at neck edge in *149th row*, and reading knit rows from left to right, and purl rows from right to left. Now shape shoulder. Cont. in patt. casting off 10 sts. at beg. of next 4 rows that start at armhole edge.

Right Front—Work as left front but work each row backwards to **. With n., work 1 row. *141st row*—With n., cast off 8, k. to end. *142nd row*—With n., p. *143rd row*—With n., dec., k. till 1 rem., inc. With n., work 3 rows dec. one st. at neck edge in each row. Rep. *143rd row*, and work one row, dec. at neck edge. Now work according to Chart C from *149th row* dec. one st. at neck edge in *149th row*. Shape shoulder as for left front.

Sleeves (both alike)—With brown wool and No. 12 needles, begin at cuff, casting on 60 sts. Work in rib of k. 1, p. 1 for $2\frac{1}{2}$ inches, inc. one st. at end of last row. Change to No. 10 needles, with r., work 2 rows st.-st. Work according to Chart D from 3rd to 31st row inclusive. *32nd row*—With r., p.

33rd row—With r., inc., k. till 1 rem., inc. With r., work 5 rows st.-st. Rep. last 6 rows once, then rep. *33rd row*. With r., work 4 rows st.-st.***. With n., rep. from *32nd row* to ***. Work according to Chart E from 68th to 96th row. With n., work 2 rows

st.-st. With n., rep. 33rd row. With n., work 7 rows st.-st. Rep. last 8 rows once, then rep. them twice with r. Rep. 33rd row.

132nd row—With r., p. Work as to Chart F from 133rd to 161st row.

162nd row—With r., p. 163rd row—With r., dec., k. till 2 rem., dec. Rep. last 2 rows

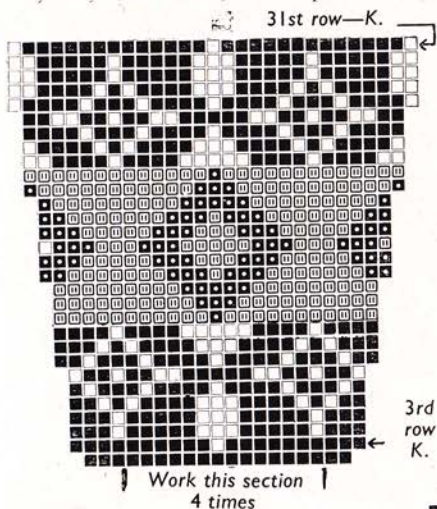


Chart D

8 times, then rep. them 9 times with n. Cont. in patt. dec. one st. at beg. and end of every row until 19 sts. rem.

Right Front Border—Using No. 12 needles and brown wool, cast on 10 sts. Work in rib of k. 1, p. 1 for 1 inch. **Next row*—Rib 3, cast off 4, rib 3. *Next row*—Rib 3, cast on 4, rib 3. Work in rib for $2\frac{1}{2}$ inches. Rep. from * 6 times, but only work $2\frac{1}{4}$ inches after 7th buttonhole. *Next row*—Dec., rib to end. *Next row*—Rib till 2 rem., dec. Rep. last 2 rows until all sts. are worked off.

Left Front Border—Work as right border, but omit buttonholes. *Neck Border*—With No. 12 needles and brown wool, cast on 1 st.

1st row—Work twice into st. 2nd row—Inc. in first st. p. 1. 3rd row—Rib till 1 rem., inc. 4th row—Inc., rib to end. Rep. last 2 rows until there are 10 sts. Cont. in rib until short side measures 14 inches. Shape end as for front borders.

To Make Up—Press st.-st. part of work on wrong side, with a hot iron over a damp cloth. Join side, shoulder and sleeve seams, matching colours. Sew borders to front edges, and round neck. Join the shaped ends of borders to shaped ends of neck ribbing, leaving a small space on right front border to form 8th buttonhole. Sew on buttons.

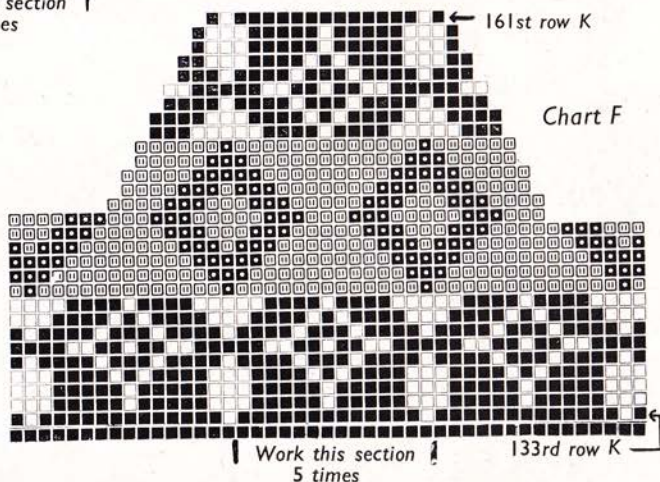


Chart F

Chart C

