

SPRING

AFTERNOON JUMPER

Materials: Of Patons Beehive Fingering 3-ply, Patonised, 3 ozs. White and 4 ozs. Light Navy 2015. A pair each No. 11 and No. 12 "Beehive" needles. A No. 12 crochet hook. Three small buttons.

Measurements: To fit 34-35-inch bust; length from top of shoulders, 20½ inches; sleeve seam, 12 inches.

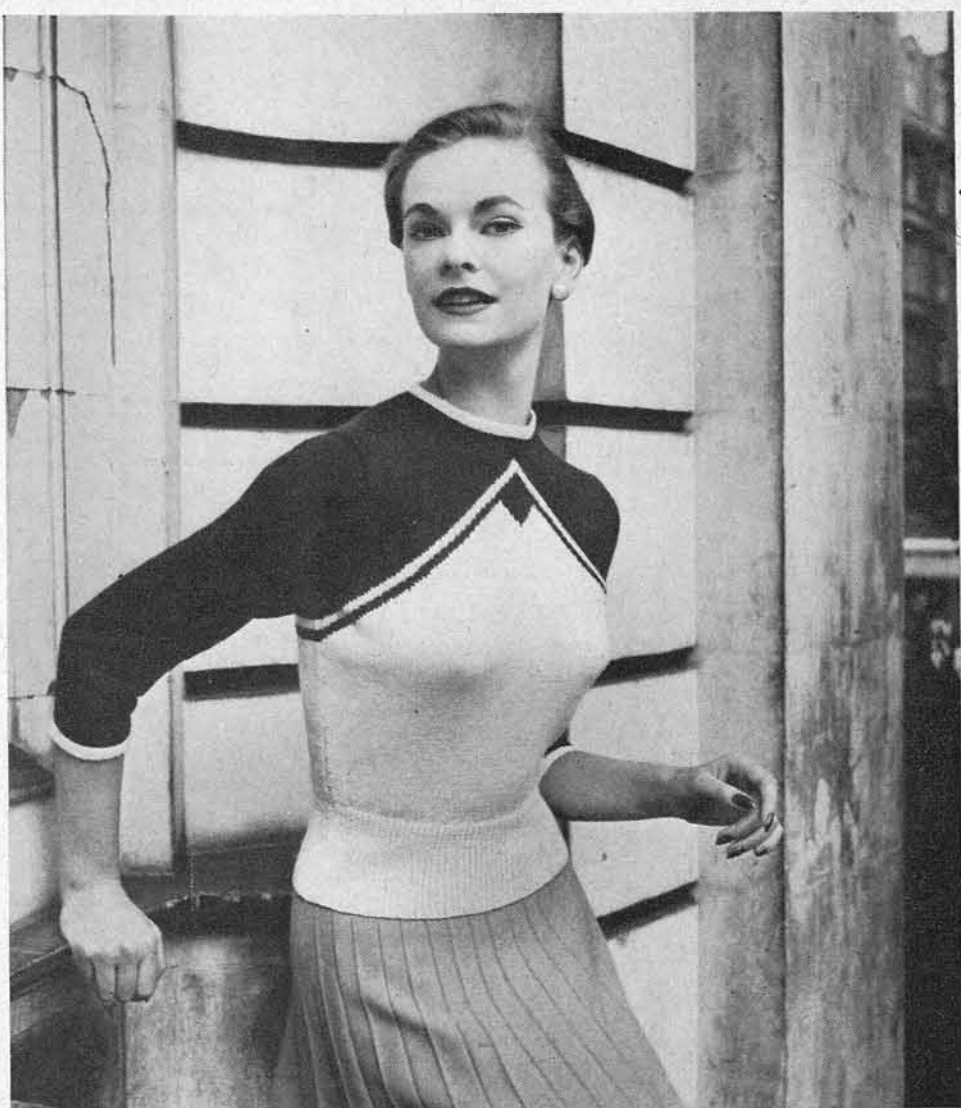
Tension: 8 sts. and 10 rows to an inch.

N.B.—Spots on chart are navy.

FRONT

With No. 12 needles and white wool, cast on 113 sts. and work 4 inches k. 1, p. 1 rib, rows on right side having a k. 1 at each end.

Change to No. 11 needles and stocking-stitch and shape sides by increasing 1 stitch at each end of 7th and every



extremely smart dark-blue and white jumper

following 6th row until there are 133 sts. Work 3 rows straight.

Now work in pattern from chart on page 18. The chart gives exactly half of the front, so on every row read from right to left of chart for first half and then back again from left to right for second half—but *do not repeat* the centre stitch. Remember to twist wools at back of work when changing colour to avoid a hole.

Your first few rows will read:—1ST row: right side facing, knit, 1 navy, 131 white, join in 2nd ball of navy, 1 navy. 2ND row: purl, 2 navy, 129 white, 2 navy. 3RD row: knit, 3 navy, 127 white, 3 navy. 4TH row: purl, 4 navy, 125 white, 4 navy. 5TH row: knit, 1 white, 4 navy, 123 white, 4 navy, 1 white. 6TH row: purl, 2 white, 4 navy, 121 white, 4 navy, 2 white.

Continue thus until 18th row of chart is done, then continue in pattern from chart and shape armholes by casting off 7 sts. at beginning of next 2 rows, then k. 2 tog. at each end of every knit row until 105 sts. remain. Work straight until 74th row of chart is done, then work 1 inch straight over all sts. in navy.

With right side facing, divide for neck:—NEXT row: k. 42, turn and leave remaining stitches on a spare needle. Continue in stocking-stitch on first 42 sts., decreasing 1 stitch at neck edge on next 4 rows, then at this edge on following 5 alternate rows (33 sts. remain). Purl back.

With right side facing, shape shoulder by casting off 11 sts. at beginning of next and following 2 alternate rows, armhole edge. *please turn to page 18*

RAGLAN BUTTON-UP

continued from page 5

to come $\frac{1}{4}$ -inch from lower edge, 11th about $\frac{1}{2}$ -inch from top and remainder at equal intervals. Mark position of buttons on left front with pins, then work holes to correspond. To make a buttonhole:—with right side facing, rib 4, cast off 3, rib to end and back, casting on 3 over those cast off.

SLEEVES

With No. 11 needles cast on 49 (53) sts. and work 3 inches k. 1, p. 1 rib. Change to No. 8 needles and continue in rib, shaping sides by increasing 1 stitch at each end of 7th and every following 6th row until there are 77 (83) sts. Work straight until sleeve measures 17 ($17\frac{1}{2}$) inches.

With right side facing, shape raglan by decreasing 1 stitch at each end of next 6 rows, then 1 stitch at each end of next and every following alternate row until 27 (31) sts. remain, then at each end of every row until 9 (9) sts. remain; cast off.

TO MAKE UP

Do not press. Join raglan seams. With right side facing and No. 11 needles, pick up and k. 99 (101) sts. all round neck. Work $\frac{3}{4}$ -inch k. 1, p. 1 rib, then make 12th buttonhole as before; work $\frac{1}{4}$ -inch rib, then make another buttonhole to correspond, work a further $\frac{3}{4}$ -inch in rib; cast off loosely in rib. Fold neckband in half and slip hem on wrong side; over-sew round double buttonhole. Join side and sleeve seams. Sew on buttons and press seams.

TO MAKE UP MAN'S SWEATER

continued from page 4

Do not press. Join side and sleeve seams. Turn under 1 inch of neck ribbing to wrong side and slip hem. Press all seams.

AZALEA CUSHION

continued from page 3

Leaves: In satin-stitch, some half-and-half yellow-green and pale green with dark green satin veins; two at left of centre top, half-and-half yellow-green and dark green (no veins); a few have a single outline of pale green stem-stitch down one edge (see separate outlines on transfer).

Branches: One, two, three or four lines of black stem-stitch.

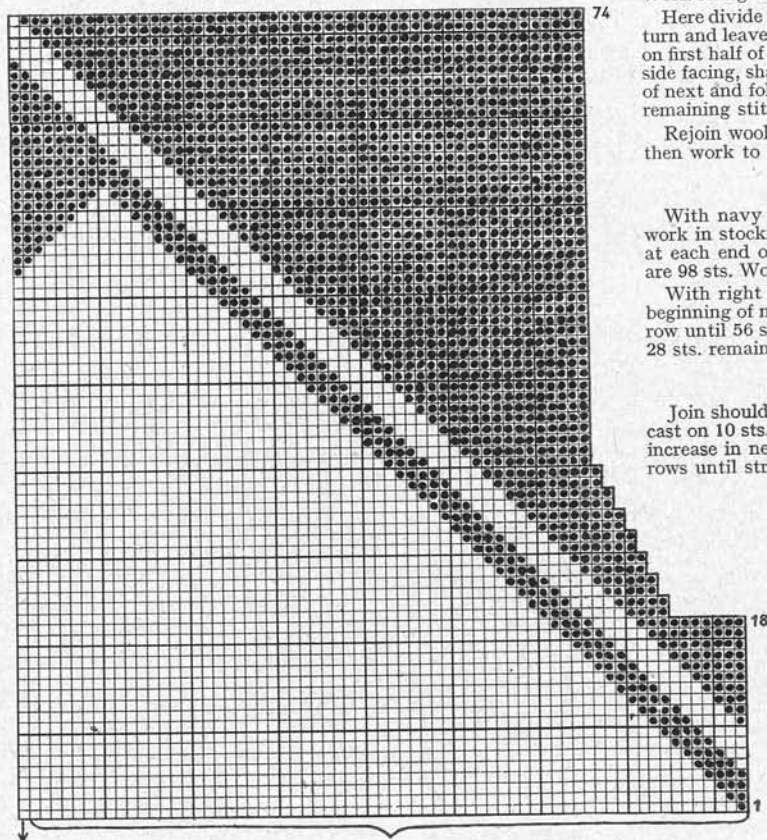
Bowl: Rows of regular long-and-short in dark and mid blue and turquoise, with an outline of turquoise stem-stitch; feet and base, worked solidly in rows of black stem-stitch.

Press finished embroidery on wrong side under a damp cloth and make up into a circular cushion, using strips for gusset; finish edge with a black cord.

NAVY AND WHITE JUMPER

continued from page 15

Rejoin wool to remaining stitches, cast off centre 21 fairly loosely, knit to end. Finish to correspond with first shoulder.



centre st.

66 sts.

BACK

Work exactly as for front until side shapings have been done (133 sts.). Work 3 rows straight in white. Join in navy and work 4 rows, then 4 rows white and 10 rows navy.

Continue in navy, and with right side facing, shape armholes by casting off 7 sts. at beginning of next 2 rows, then k. 2 tog. at each end of every knit row until 105 sts. remain. Work straight until back measures $17\frac{1}{2}$ inches.

Here divide for back opening:—with right side facing, k. 52, turn and leave remaining stitches on a spare needle. Continue on first half of work until back matches front, then with right side facing, shape shoulder by casting off 11 sts. at beginning of next and following 2 alternate rows, armhole edge; cast off remaining stitches.

Rejoin wool to remaining stitches, centre back, cast off 1, then work to correspond with first shoulder.

SLEEVES

With navy wool and No. 11 needles, cast on 66 sts. and work in stocking-stitch, shaping sides by increasing 1 stitch at each end of 7th and every following 6th row until there are 98 sts. Work straight until sleeve measures 12 inches.

With right side facing, shape top by casting off 4 sts. at beginning of next 2 rows, then k. 2 tog. at beginning of every row until 56 sts. remain, then at each end of every row until 28 sts. remain. Cast off.

NECK AND SLEEVE BINDING

Join shoulder seams. With white wool and No. 11 needles, cast on 10 sts. and work thus:—1st row: k. 1, k. 2 tog., k. 5, increase in next stitch, k. 1. 2nd row: purl. Repeat these 2 rows until strip fits all round neck; cast off. Work 2 similar strips for sleeves.

TO MAKE UP

Press work carefully on wrong side under a damp cloth. Join side and sleeve seams; insert sleeves. With right side facing, sew binding all round neck, using matching sewing cotton; turn binding over to wrong side and slip hem. Bind edges of sleeves in same way. With navy wool and crochet hook, work a row of d.c. down both sides of back opening, then a 2nd row down right side making 3 button-loops. Sew on buttons; press all seams.

18